

Information Resources and Services

**Office of Academic Resources,
Chulalongkorn University**

**Information Literacy Promotion Service,
Information Service Center for Learning and Research,
The Office of Academic Resources (OAR)**

Chulalongkorn University



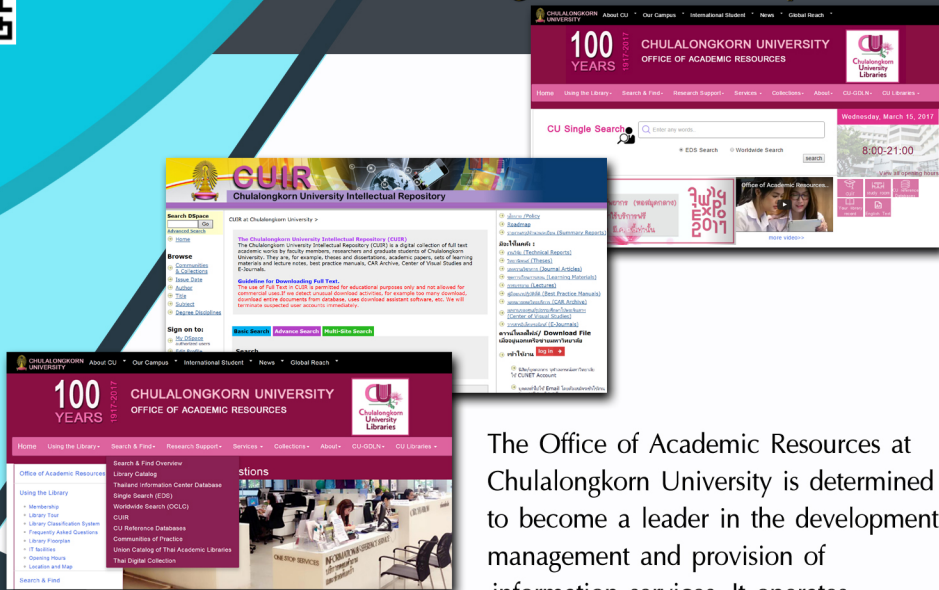
ทรัพยากรสารสนเทศ ฐานข้อมูล และแหล่งความรู้
 (Information Resources, Databases and Knowledge sources)



www.car.chula.ac.th



Office of Academic Resources, Chulalongkorn University



The Office of Academic Resources at Chulalongkorn University is determined to become a leader in the development, management and provision of information services. It operates according to the University's objectives by supporting, facilitating and giving consultation in matters concerning the work under its responsibility.

The Office of Academic Resources is responsible for providing and developing information resources, for example, books, textbooks, theses and dissertations, research works, journals, educational media, databases and knowledge banks. It has developed the management of basic services and different forms of proactive services through the use of innovations and modern technology. It also offers a service in the form of assistance to and support of research activities by subject specialists. All these services are provided with the aim of enabling the Chulalongkorn Community and society to apply information and knowledge in teaching, conducting research and learning, efficiently. Library user can access at www.car.chula.ac.th

Information Resources, Databases and Knowledge Sources

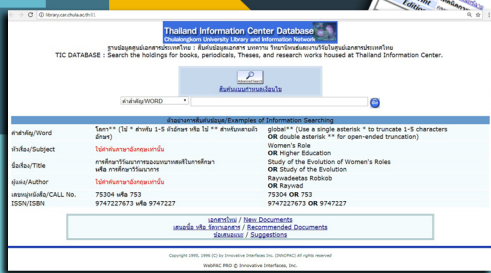
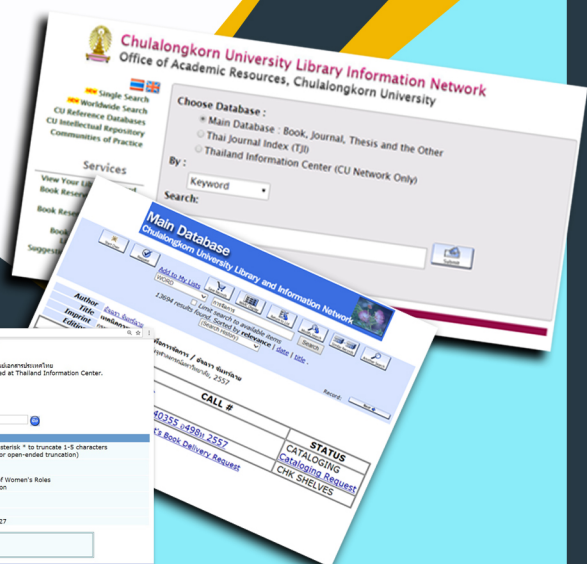
The Office of Academic Resources has developed a strategy for providing services via the single search, which is a one-stop solution for the discovery and delivery of books, journal articles and other materials from Library Catalogue, the CU Reference Databases and the Chulalongkorn University Intellectual Repository.

Library Catalog <http://Library.car.chula.ac.th>

The Library Catalogue is a bibliographical database of information resources that are 3 databases

1. Main Database : List of Books, Journals, Theses and the other
2. Thai Journal Index Database
3. Thailand Information Center Database

Library users can access via the Chulalongkorn University Library Network, available at <http://library.car.chula.ac.th>



The CU Reference Databases www.car.chula.ac.th/curef

The CU Reference Databases are electronic databases covering different fields, The information provided is in the form of a list of bibliographies, abstracts and full text e-Journals, e-Books, theses and dissertations from foreign universities. Most of the e-Documents in the CU Reference Databases are documents in foreign languages. CUCommunity can access at www.car.chula.ac.th/curef, For more information, please contact at rss@car.chula.ac.th



The Chulalongkorn (CUIR)

The Chulalongkorn University Intellectual Repository (CUIR) is a digital collection of full text academic works by faculty members, researchers and graduate students of Chulalongkorn University. They are for example, theses and dissertations, academic papers, sets of learning materials and lecture notes, best practice manuals, CAR Archive, Center of Visual Studies and E-Journals. Library users can access at <http://cuir.car.chula.ac.th>, For more information, please contact at cuir@mail.car.chula.ac.th

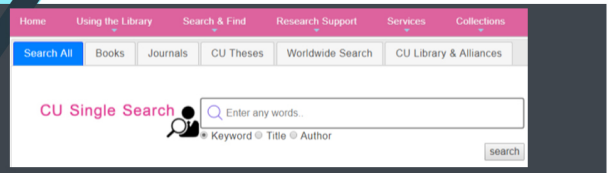
University Intellectual Repository <http://cuir.car.chula.ac.th>



CU Single Search

<http://www.car.chula.ac.th/singlesearch>

Single Search is a one-stop solution for the discovery and delivery books, journal articles, theses and the others from library catalog, CUIR - Chulalongkorn University Intellectual Repository and CU Reference Databases. You can search very easily in Primo. Just type one or more words you are looking for and click the search button.

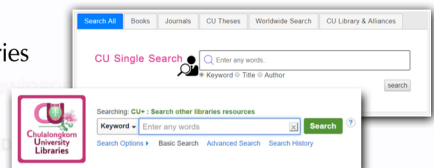


Chula Plus

Information retrieval service and interlibrary loan more than 1,500,000 records from 14 libraries membership in Thailand, the libraries membership for this service including Khon Kaen University, Naresuan University, Mae Fah Luang University, Maejo University, Phayao University, Mahasarakham University, Suranaree University of Technology, Ubon Ratchathani University, Silpakorn University, Sukhothai Thammathirat Open University, Walailak University, University Prince of Songkla University, Kasetsart University and Chulalongkorn University.

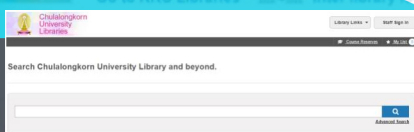
1. Put the keywords and search in to search screen menu
2. Select **CU+ : Search other libraries**

the searching: CU+ : Search other libraries resources will display, then put your interesting keywords for searching



3. Select the results of searching and click at that libraries which you wish to send Inter library loan request.

[Go to KKU Libraries](#) [Inter library loan Request](#)



World Wide Search (OCLC) : The World's Largest Library Catalog <http://chula.on.worldcat.org/discovery>

OCLC WorldCat.org : The World's Largest Library Catalog is a system that provide the efficiency of information retrieval, making it easy for the recipient to access the information they need. Comprehensive information from bibliographic databases from libraries membership around the world, including information from Chulalongkorn University library network database, CU Reference Databases, Chulalongkorn University Intellectual Repository (CUIR), and also linked to the electronic full text information from Chulalongkorn University. Library users can search at

<http://www.car.chula.ac.th>

and select at "Search & Find" options then select at World Wide Search (OCLC) or direct access to

<https://chula.on.worldcat.org/discovery>

In addition, library membership will be able to borrow books from the WorldShare Interlibrary Loan and they can submit a request form to the responsible librarian via the search screen via <https://chula.on.worldcat.org>



Community of Practice (Cop) <http://cop.car.chula.ac.th>

Community of Practice (CoP) is a digital collection of biographies and work by the expertise of Chulalongkorn University community, which refers to faculty, researchers who specialize in various fields of the university, both academic and research. Library user can access to CUIR database which collects full text of academic and research papers.



ChulaConnex (The Way Connect with Chulalongkorn's Experts) <https://connex.chula.ac.th>

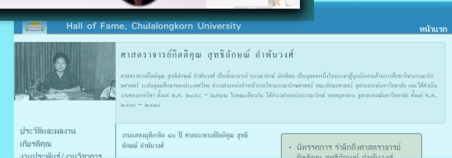


ChulaConnex is a databases of Chulalongkorn university experts more than 7,816 cu connex members, 27,737 journal, 55,675 distinct publication record sets (bata) and link to scopus and pubmed.

The Hall of Fame at Chulalongkorn

<http://www.car.chula.ac.th/halloffame>

The Hall of Fame at Chulalongkorn University is a website containing information about the life and works of renowned person who have made a contribution to Chulalongkorn University. At present, the website includes information about Professor Emeritus Sutthilak Amphanwong the founder of Library and Information Science, education in Thailand; Professor Boonrod Binthasant, a revered professor of Chulalongkorn University; Professor Dr. Kasem Suwannakul, a former president of Chulalongkorn University; and Professor Emeritus Termsak Krishmara, a revered professor of Chulalongkorn University. Library users can access at <http://www.car.chula.ac.th/halloffame>

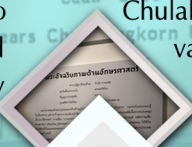


King Chulalongkorn Digital Archives

<http://kingchulalongkorn.car.chula.ac.th/th/home>

On the centennial of the royal grace upon Chulalongkorn University's establishment in 2017, Office of Academic Resources (OAR), Chulalongkorn University would like to take an opportunity to celebrate this special occasion by developing intellectual heritage and conveying vision to reflect the royal policies and activities of King Chulalongkorn, in order to be the academic reference source for Chulalongkorn University, Thailand and international community.

In this regard, OAR creates the database of King Chulalongkorn Digital Archives, and displays the database exhibition in recognition of the intuition along with the royal grace of King Chulalongkorn to Chulalongkorn University and Thailand. This project will be an important and valuable corpus on the prime patron of linking and distributing on global information network, searchable anywhere anytime, and beneficial for the further study, research, and expansion of knowledge.



ASEAN Database website
<http://tic.car.chula.ac.th/th>

Offers selective documents with sample pages, abstracts, indexes and keywords regarding ASEAN Economic Community (AEC), ASEAN Political-Security Community (APSC), and ASEAN Socio-Cultural Community (ASCC) in the fields of national and regional policy, integration strategy and progress, intra-regional relations, inter-regional cooperation, ASEAN Plus, economic cooperation, comprehensive regional security, and Southeast Asian country insights. The website also delivers infographics, news and articles relating to ASEAN and Thailand's movement, as well as monthly recommended books, and selected ASEAN ebooks which are downloadable by Chula member account.

ตัวอย่างการจัดทำและเผยแพร่ข้อมูล ASEAN ที่น่าสนใจในรูปแบบ
Infographics เพื่อให้ผู้อ่านเข้าใจง่าย



Union Catalog of Thai Academic Libraries - UCTAL

<http://uc.thailis.or.th>

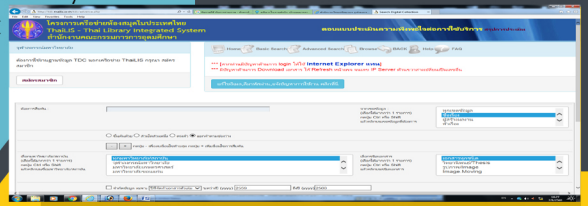
The Union Catalogue of Thai Academic Libraries is a list of bibliographies relating to books, journals and other information resources residing in the libraries of Thailand's institutions of higher education according to the Project for the Development of the Thai Library Integrated System (ThaiLIS). Library users can access at <http://uc.thailis.or.th>



The Thai Digital Collection

<http://tdc.thailis.or.th>

The Thai Digital Collection is a database of full text theses and dissertations, research reports and other items, which are the works of students, faculty members, researchers and staff in higher education institutions in Thailand according to the Project for the Development of the Library Network System in Thailand. Library users can access at <http://tdc.thailis.or.th>



Remark:

How to access our information resources, databases and knowledge resources;

In campus:

Chulalongkorn University membership is able to use the information resources, databases and knowledge resources of Chulalongkorn University via www.car.chula.ac.th by connecting to Chulalongkorn University's network

For more details please access at: <http://www.car.chula.ac.th/facilities.php>

Off campus

Connecting through the CUNET VPN (Virtual Private Network) service for more details access at: http://www.it.chula.ac.th/cunet_vpn_service Or use the EZproxy service at EZproxy.car.chula.ac.th



Information and Library Services

The Office Academic Resources organizes and creates useful, value-added information services with innovative and modern technologies. To promote and support teaching, learning and research in Chulalongkorn University: university of innovation and research as well as information and academic services to society by paying attention to the quality and satisfaction of Chulalongkorn Community and the society.


Reference Service and Information Searching Service

These services provide suggestions about methods of acquiring Information from information sources both inside and outside the Office of Academic Resources, information searching service from the Office's online databases as well as of those of other information sources. And also offers virtual reference service via websites, e-mail, Line @, Chat.

 webmaster@car.chula.ac.th

 rss@car.chula.ac.th
(CU Reference Databases)

 CU Library

 0-2218-2929



Bibliographic Management Tools Services

Bibliographic management tools services, as well as help, guides, consultation, and training. Ask for more information, please contact Research Support Service (RSS), Information Service Center for Learning and Research.



0-2218-2930



rss@car.chula.ac.th

Download Set Up File & User Guide for EndNote
<http://www.car.chula.ac.th/endnote.php>



Consultation and Suggestions Services on the Detection of Plagiarism

Chulalongkorn University students can contact the Research Support Service (RSS), Information Services Center for Learning and Research to obtain instructions for accessing Akarawisut, checking writings system by Chulalongkorn University to find messages that may be mimicking other people's work with large academic databases and the Turnitin, program to check the level or criteria of copying or copying information to prevent and correct the problem of plagiarism.

☎ 0-2218-2930

✉ rss@car.chula.ac.th

Akarawisut <http://plag.grad.chula.ac.th/>

Turnitin http://www.turnitin.com/en_us/

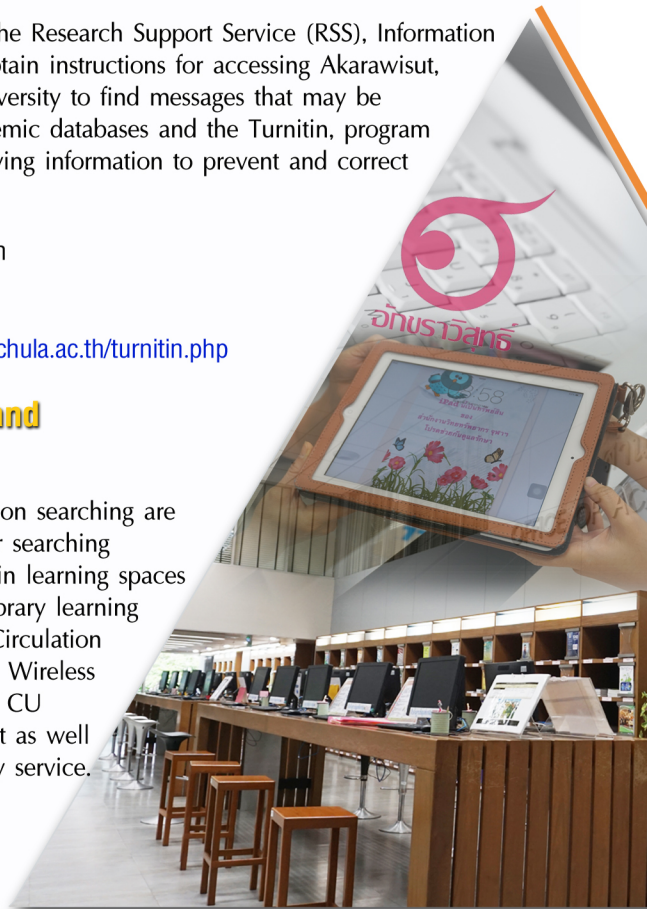
Guides, Consultation for Turnitin <http://www.car.chula.ac.th/turnitin.php>

Computers Services for Internet and Information Searching

Computers service for Internet use and information searching are provided on the 1st floor. Computers Service for searching information resources in libraries also available in learning spaces on other floors. Tablets service is used within library learning spaces. CU Communities can borrow tablet at Circulation Counter, 1st floor. ChulaWIFI for Chulalongkorn Wireless Network available in the library for members of CU Community who want to connect to the internet as well as working spaces for the convenience of library service.

WIFI External Membership Zone Service

The Office provides computers and WIFI system for external users who want to use the Internet and searching information from the Office's online databases. By providing the WIFI External Membership Zone on the 4th floor. The external users can apply for the annual membership at Circulation Counter, 1st floor and apply daily at Reference Service Counter, 1st floor. ☎ 0-2218-2929



New Books Service

A list of new information resources of the Chulalongkorn University Network Library available at <http://library.car.chula.ac.th/ftlist>



Suggest a Title for Purchase

Service for suggesting items of information resources, including books, journals, publications, and other information resources in order to the central library of the Office of Academic Resources should acquire and provide for service.

<http://www.library.car.chula.ac.th/acquire>

CU Library Mobile Application Service

Chulalongkorn University Library services in the hands of everyone, connect services with mobile applications available both in iOS and Android. Library users can use useful online library services such as searching library resources in Chulalinet's database, checking borrowing-returning resources, lending library resources online, book delivery service between libraries in Chulalongkorn University for CU Community, access to full documents fastly and easily, keep up to date with current library news and activities, etc.

More information and download CU Library Mobile App



<http://www.car.chula.ac.th>

Circulation Service

Members of Chulalongkorn University Community may use their Chulalinet card or student ID card to borrow information resources such as books, publications as well as tablets and headphones, according to rights and borrowing regulations.

■ Self Check & Book Drop Services

CU community can borrow books on their own by using the self-check machine, located on the 1st floor and other floors and return the books 24 hours by using the Book Drop Machine.

■ View Your Library Record / Book Renewed Services

<https://www.car.chula.ac.th/record.php> or [CU Library Mobile App](#)

- **Due Date Alert Service (Courtesy Notices)**

E-mail alert service to users via e-mail 2 days prior to due date to remind them which of the books they have borrowed are close to the due date so that they may renew or return the book as scheduled without a fine.

- **Online Book Reserve Service (Hold)**

A service that facilitates the booking of books they want via online without having to make a reservation at the library.

- **Online Cataloging Book Request**

Service that facilitates library users who need to use a book that is in the cataloging process. (Status: Cataloging) Users can submit an online request through the cataloging request online form of the desired book on OPAC database.



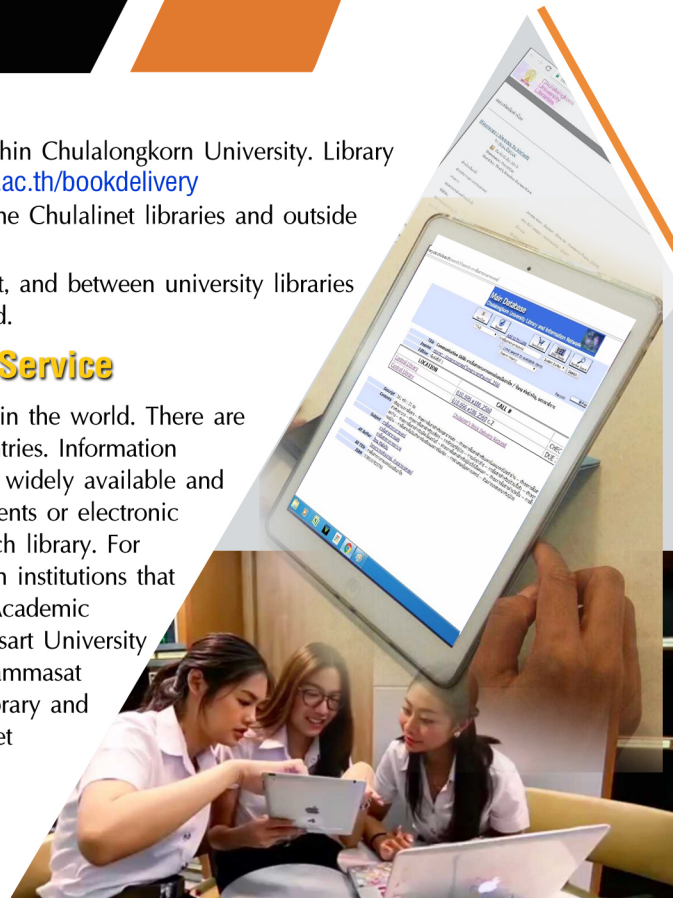
Inter-library Loan Service

- Book delivery service between libraries within Chulalongkorn University. Library users can access via <http://www.car.chula.ac.th/bookdelivery>
- Borrowing and copying services between the Chulalinet libraries and outside agencies.
- Inter-libraries loan service within Chulalinet, and between university libraries with service charge that is actually incurred.

WorldShare Interlibrary Loan Service

The largest library interlibrary loan service in the world. There are over 9,000 network members in 149 countries. Information resources of libraries around the world are widely available and can be borrowed request copies of documents or electronic files in accordance with the policies of each library. For Thailand now, there are 6 higher education institutions that participate in this network: The Office of Academic Resources, Chulalongkorn University, Kasetsart University Library, Chiang Mai University Library, Thammasat University Libraries, Mahidol University Library and Knowledge Center, Hachiew Chalermprakiet University Library.

<https://chula.on.worldcat.org/discovery/>





Library Orientation

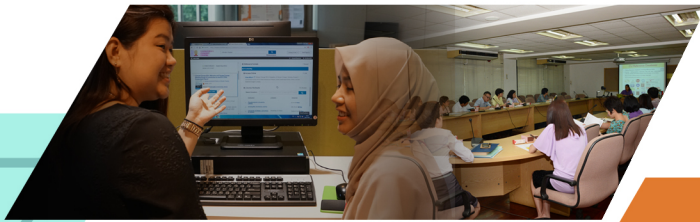
This service aims to promote knowledge and understanding of information resources and information services in the support of teaching and learning as well as research activities. For more information, please contact Information Literacy Promotion Service , Information Service Center for Learning and Research.

✉ ilps@car.chula.ac.th or OAR website <http://www.car.chula.ac.th/> and can access online library orientation via the web-based learning media.

Training in Research Support Databases and Research Tools

This service aims to disseminate knowledge and consultation and organize training by subject specialists in the use of CU reference databases in different fields, programs and research tools that support the production of academic works and research, including theses and dissertations, in order to be of benefits to teaching and research. For more information, see OAR website <http://www.car.chula.ac.th/> and please contact Research Support Service, Information Service Center for Learning and Research.

✉ rss@car.chula.ac.th



Subject Librarian Service

This service provided by a group of librarians / information specialists whose expertise lies in-depth information about specific fields of social sciences, humanities, science and technology and health sciences. It aims at supporting the research activities of the faculty members, researchers and graduate students of Chulalongkorn University in the form of consultations / suggestions on how to search from different types of information resources, research databases and online databases that are available, the use of reference management tools and advice and information that may be useful for the publication and dissemination of academic works abroad.

Providing Learning & Co- Working Spaces, Study Rooms Services

The Office of Academic Resources provides and has developed a variety of learning spaces such as collaborative learning space, co-working space to support the teaching, learning and research of library users.

Study Rooms are provided for Chulalongkorn University Community to use as a venue where they can exchange and share ideas and knowledge in order to promote and support modern teaching and Learning.

Reservations Study Rooms online <http://omega.car.chula.ac.th/rsroom/>

Center of Media Development, Innovation and Technology (CMD)

This center provides media services with modern technology to support teaching, research, academic activities, public relations for Chulalongkorn University and dissemination of knowledge to society. These services are production service, event & classroom capture service, streaming/ live broadcast service, Chulalongkorn University digital signage service, digital preservation service, teleconference, media database service, media training service, media service & collaborative table service.

http://www.car.chula.ac.th/media_overview.php

 cmd@car.chula.ac.th

 <http://www.facebook.com/CMDCU/>



Thailand Information Center (TIC)

This center provides limited, in-depth information and insights into social and behavioral sciences and focus on information about Thailand and Southeast Asian countries as well as the ASEAN community both in Thai and English, more than 95,000 titles covering political, economic, social, security, history, culture, ethnic language, policy and national development. There are librarians who help searching and provide individualized consultation services. Library users can search for the basics themselves via TIC Database and ASEAN Database Website.

<http://tic.car.chula.ac.th/>



International Information Center (IIC)

This center provides information related to regional studies and cooperation between countries in development projects in different regions across the world, for example, European documentation, American studies, World Bank documentation, the International Monetary Fund, the United Nations Conference on Trade and Development and, the information resource by the Asian Development Bank.

<http://www.car.chula.ac.th/iic2.php>



CU Intellectual Heritage Center (CIH)

The information resources available from this service include rare books/ documents/ manuscript considered part of the Chula Intellectual Heritage. These are, for example: royal compositions by King Rama V and King Rama VI; invaluable ancient documents which were privately owned by Krom Phra Chantaburi Nareunath and Krom Muen Phithaylaph Preuthiyakorn; hand-written manuscripts of the Government Gazette from the book until the books published in 1944; books published on special occasions; special printing materials in the form of foreign books about Thailand; the exhibition and information sources about Phrachao Boromwongther Krom Luang Wongsathiratchsanit; and the Wongsathiratchsanit Collection. There is also King Chulalongkorn Digital Archives Service.



<http://library.car.chula.ac.th>

<http://kingchulalongkorn.car.chula.ac.th>

Linking Service to the Chulalongkorn University Libraries

Library users can access through The Office of Academic Resources website <http://www.car.chula.ac.th/> and then click **CU Libraries** menu for linking to the faculty libraries/ institute libraries in the Chulalongkorn University Libraries Network (ChulaLiNet)

Borrowing Privileges

Information Resources Types	Users Types	Items	Loan Period	Overdue ✨ Fines
General Books	Faculty	20 Items	30 Days	3 Baht/Day/ Item
Special Publication:	Staff	15 Items		
CL CU	Postgraduates	15 Items		
CL GP	Graduates	10 Items		
CL TH	Undergraduates	7 Items		
(Only copy 2)	Membership Type A	5 Items		
CL Reserved Books	All Type of Users	2 Items	7 Days	30 Baht/Day/ Item
Tablets (iPad)	CU Community Only	1 Item	3 Hours/Day (Only use in OAR)	30 Baht/ Hour

* More Information:

- The maximum fine for students of all levels of education and type A members is 100 baht. The system will automatically suspend all types of services until payment is made.
- Students Member will be automatically renewed every semester. Unless there is a lien or a lien with the library in excess of the loan regulations.
- Students applying for graduation must return library books and information resources including outstanding debts to the library before graduation.

Self-service for scanning / photocopying / printing

The Office of Academic Resources provides self-service for scanning / photocopying/ printing with user friendly functions machine. Library users can be contacted at the counter service on the 1st floor to refill the student card or buy a card to use the service.



The Office of Academic Resources, Chaleomrajakumari 60 Building Branch



Service Hours

Monday - Friday 9.00 am. - 5.00 pm.

Saturday - Sunday 9.00 am. - 6.00 pm.

Reference Service & Circulation Service 2nd Floor  0-2218-3109
Co-Working Space Service M 2 Floor  0-2218-3108





Information Resources

● Chulalongkorn University Theses

Chulalongkorn University Theses both printed and electronic documents. Librarians provide advices for searching theses.

- Printed theses (Academic year 1946 - 2012) are available on the second floor and for the year before 2000, library users must contact library staff at the 2nd floor.
- For online theses, library users can search from the library database via www.car.chula.ac.th or directly search the CUIR database at <http://cuir.car.chula.ac.th>

● Books/Independent studies/research reports in Nursing, Psychology, Sports Science, Allied Health Sciences, and Interdisciplinary Studies.

Library Services

- Reference Services
- Circulation Service / Book Delivery Service
- Learning Space Service in the 2nd floor and Co-Working Space Service with media, equipment and modern collaborative table in M2 floor
- Self-Service Machine for printing/ scanning/ photocopying

Dewey Decimal Classification

- 000 Generalities
- 100 Philosophy
- 200 Religion
- 300 Social sciences
- 400 Language
- 500 Science
- 600 Technology
- 700 Arts and recreation
- 800 Literature
- 900 History and geography

Library of Congress Classification

- A General Works
- B Philosophy psychology, Religion
- C Auxiliary Sciences of History
- D History : General and Old World
- E-F History : America
- G Geography, Antropology, Recreation
- H Sociall Sciences
- J Political Science
- K Law
- L Education
- M Music and Books on Music
- N Fine Arts
- P Philology and Literatures
- Q Science
- R Medicine
- S Agriculture
- T Technology
- U Military Science
- V Naval Science
- Z Bibliography, Library Science

NLM Classification Preclinical Sciences:

- QS Human Anatomy
- QT Physiology
- QU Biochemistry Cell Biology and Genetics
- QV Pharmacology
- QW Microbiology and Immunology
- QX Parasitology
- QY Clinical Laboratory Pathology
- QZ Pathology

Medicine and Related Subjects:

- W General Medicine Health Professions
- WA Public Health
- WB Practice of Medicine
- WC Communicable Diseases
- WD Disorders of Systemic, Metabolic or Environmental Origin.etc.
- WE Musculoskeletal System
- WF Respiratory System
- WG Cardiovascular System
- WH Hemic and Lymphatic Systems
- WI Digestive System
- WJ Urogenital System
- WK Endocrine System
- WL Nervous System
- WM Psychiatry
- WN Radiology. Diagnostic Imaging
- WO Surgery



E-Knowledge Base of Chula
Office of Academic Resources
<http://www.car.chula.ac.th>



OAR Service Directory

<p>วารสาร / หนังสือนจอง บริการตอบคำถามและช่วยค้นคว้า บริการยืมคืน โซนอินเทอร์เน็ตและสืบค้นสารสนเทศ พื้นที่เรียนรู้ บริการเครื่องยืมคืนอัตโนมัติ บริการเครื่องพิมพ์งาน/สแกน/ถ่ายเอกสารด้วยตนเอง มุมหนังสือใหม่/หนังสือแนะนำ มุมกาแฟ</p>	1 F	<p>Journals / Newspapers / Reserved Books Reference Service Circulation CU Internet and Searching Zone Learning Space/Learning & Sharing Arena Self-Checked Service Self-Printing & Scanning & Photocopying Services New Books & Interesting Books Corner Coffee Corner</p>
<p>บริการส่งเสริมการรู้สารสนเทศ บริการสนับสนุนการวิจัย ห้องคนควากลุ่ม พื้นที่เรียนรู้และทำงานร่วมกัน</p>	2 F	<p>Information Literacy Promotion Service Research Support Service Group Study Rooms Learning Space / Co-Working Space</p>
<p>ศูนย์พัฒนาสื่อ นวัตกรรม และเทคโนโลยี บริการสื่อ ศูนย์สืบพัสดุวัฒนธรรมจีน สถาบันขงจื้อ จุฬาลงกรณ์ ห้องประชุม</p>	3 F	<p>Center of Media Development, Innovation and Technology Educational Media Service Chinese Culture Experience Center Meeting Room</p>
<p>หนังสือสาขามนุษยศาสตร์ (CL 000, 400, 800) หนังสือสาขาวิทยาศาสตร์ (CL 500, 600) ห้องคนควากลุ่ม ห้องอบรม โซน WIFI External Membership</p>	4 F	<p>Humanities Collection (CL 000, 400, 800) Sciences Collection (CL 500, 600) Group Study Rooms Training Rooms WIFI External Membership Zone</p>
<p>หนังสือสาขาสังคมศาสตร์ (CL 100, 200, 300, 700, 900) ศูนย์สารสนเทศนานาชาติ ศูนย์รัสเซีย มูลนิธิรุสกีร์ ห้องคนควากลุ่ม บริการถ่ายเอกสาร</p>	5 F	<p>Social Sciences Collection (CL 100, 200, 300, 700, 900) International Information Center (IIC) Russian Center of the Russkiy Mir Foundation Group Study Rooms Photocopy Service</p>
<p>ศูนย์มรดกภูมิปัญญา หนังสือหายาก สิ่งพิมพ์พิเศษ ศูนย์เอกสารประเทศไทย</p>	6 F	<p>CU Intellectual Heritage Center Rare Books Collection Special Publications Thailand Information Center (TIC)</p>
<p>ห้องประชุม</p>	7 F	<p>Conference Room</p>





**Office of Academic Resources,
Chulalongkorn University**

Tel : 0-2218-2929

Fax : 0-2215-3617, 0-2218-2907

 webmaster@car.chula.ac.th

 <http://www.car.chula.ac.th>

 <http://www.facebook.com/ChulaLibrary>

 **ChulaLibrary**

 **CU Library**

 <http://www.youtube.com/prcarchula>

